

G-R-A-S-S---R-O-O-T-S---M-O-V-E-M-E-N-T

A VISION: ORGANIZATION + INVOLVEMENT

- > The community formally reclaims the piece of waterfront between North 7th and North 9th Streets.
- > Residents, educators, artists, and community-based organizations create a coalition to manage and revitalize this unique open space.
- > As the landscape architect/design team, we would oversee initial phases of the design and construction and continue to work with the coalition over the years on realization of later stages, technical issues, material and planting research.

A STRATEGY: COMMUNITY + ECOLOGY

- > Public access is established and plantings and people reconnect the community with its waterfront.
- > Ecological functions at the water's edge are restored and enhanced.
- > Canvases are raised over the park, crossing territories, activating community participation as a new flexible, floating system that merges with established, existing ground, transforming the site on a seasonal, monthly, and daily basis.

Grass

- > Every part of the upland waterfront is seeded or planted with different types of grasses (lawn, native meadow, ornamental). This green 'carpet' forms the underlying texture of the park while providing access and usability.
- > A pier-like Floating Garden is established to stimulate the ecological health of the water's edge; this strip of wetland plantings continues the North 8th St. axis to the waterfront and beyond.

Roots

- > Plants grow their roots in the ground and claim the land back from industrial and commercial uses.
- > At the Floating Garden the construction of layers of mud and vegetation aids water filtration and develops ecological diversity at the water.
- > Existing historical structures, materials and patterns are preserved and reused, establishing the roots for new movements.

Movement

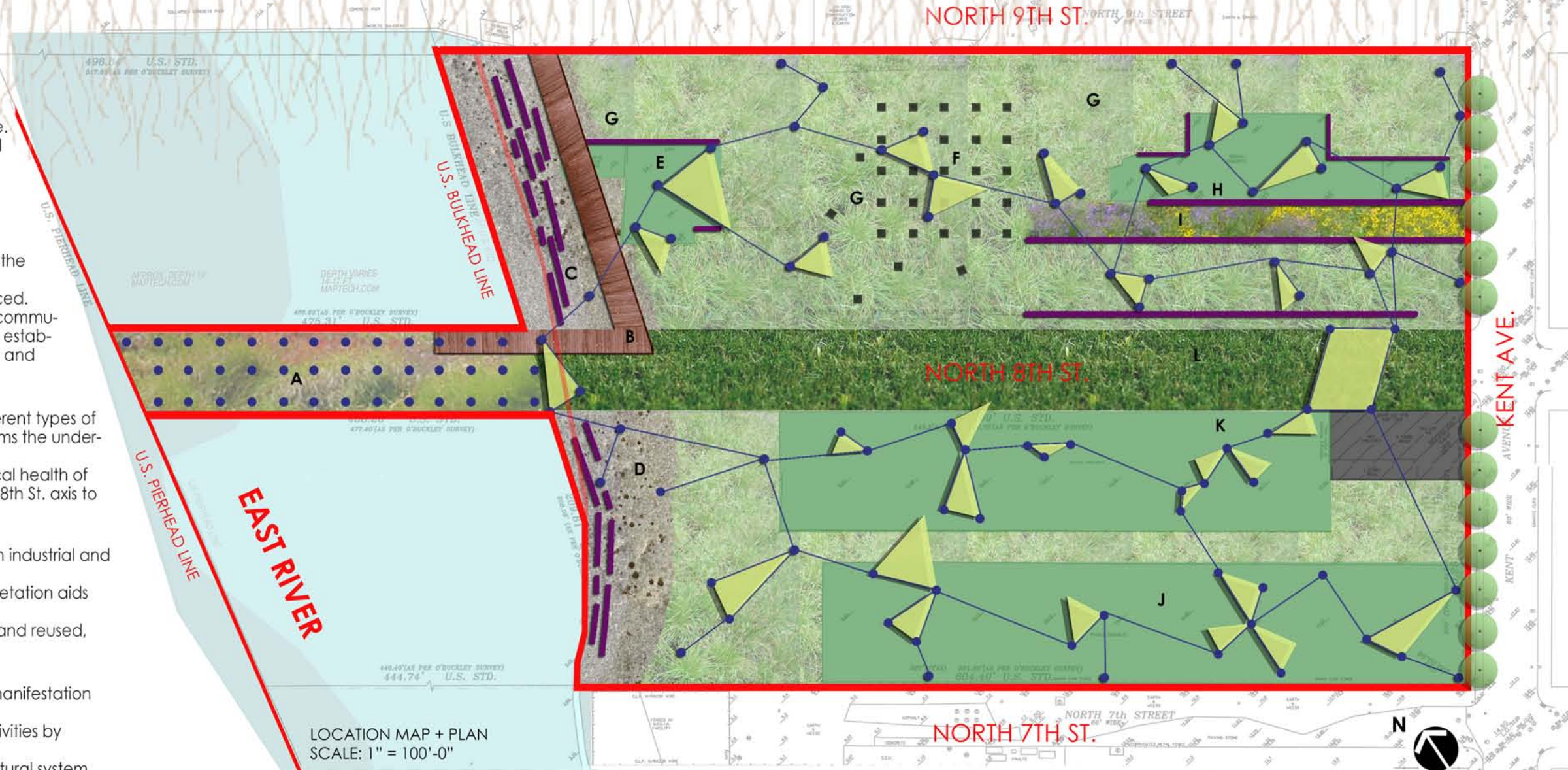
- > A dynamic pattern of overhead canvases presents the physical manifestation of the movement of people to the water's edge.
- > Emerging community-based groups claim a space for various activities by staking out an area of their choice with canvas structures.
- > Canvases emerge and disappear in a flexible, ever-evolving structural system according to community needs, events, and seasonal rotation.
- > Taking root infrastructurally, the canvases may grow and spread across the site, analogous to a plant's root system. Just as the plant's roots seek out areas for growth, these canvases will help sustain the neighborhood's vital community life.

Projected Cost

- > Based on community volunteer labor and the use of salvaged materials, total cost could be roughly \$1-\$2/SF for the initial phases of project. For contained, highly programmed areas developed in later phases, cost could be \$30-\$50/SF.

A FUTURE: IMPLEMENTATION + EVOLUTION

- > The Williamsburg Waterfront becomes the focal point for a vibrant neighborhood.
- > Implemented, designed and, in parts, constructed by the community, the park evolves over the years reflecting the diversity and flexibility of the neighborhood and the movement of its changing expressions.



- A FLOATING GARDEN
 - B WOOD BOARDWALK
 - C CONCRETE ENDPOUR - TERRACED SEATING
 - D CLEANED & STABILIZED BEACH
 - E COMMUNITY SPACE - PASSIVE RECREATION & SMALL EVENTS
 - F SEATING FOR PASSIVE RECREATION
 - G ORNAMENTAL GRASS PLANTINGS
 - H EXISTING ART WALLS - 'GREEN ROOMS' FOR EDUCATION & PLAY
 - I WILDFLOWER MEADOW - ECOLOGICAL STUDIES & PASSIVE RECREATION
 - J EXISTING CONCRETE PLATFORM FOR GROUPS - ART, DANCE, MUSIC WORKSHOPS & STUDIOS
 - K EXISTING CONCRETE PLATFORM FOR ACTIVITIES - MARKETS, FESTIVALS, CONCERTS, PERFORMANCES
 - L LAWN FOR ACTIVE RECREATION & PARK ACCESS
 - N EXISTING 2-STORY BUILDING
- VERTICAL SUPPORT + FLOATING GARDEN PYLONS
 - CONNECTING OVERHEAD PIPE SYSTEM
 - ▲ OVERHEAD CANVAS
 - RELOCATED FOUNDATION BLOCK



< FLOATING GARDEN ON EAST RIVER >

< EROSION CONTROL >

< WOOD BOARDWALK >

< OPEN PARK WITH GRASS PLANTINGS >

< EXISTING CONCRETE SLAB W/ RAISED CANVASES >

< EXISTING BUILDING ON SITE >

< KENT AVENUE >

G-R-A-S-S---R-O-O-T-S---M-O-V-E-M-E-N-T

SALVAGED MATERIALS REUSED



Historical features help define the park's identity.

The eroding waterfront is stabilized using existing & salvaged materials. Saving existing appropriate structures, foundations, walls with murals, etc., allows reuse for programming of various activities—passive recreation, waterfront access, event spaces—and becomes part of the language of the park. Coupled with outside materials that are free or low-cost, these elements reinforce the community's commitment to conservation and ecological construction.

Endangered ecology is revitalized and balanced.

Leftover structural elements modified as integral parts of the design.

COMMUNITY INVOLVEMENT

A neighborhood coalition is established for the stewardship and implementation of the park. An elected board decides on space allocation for community groups and oversees the installation of canvases. This group is also responsible for



Active recreation develops around existing structures.



Community gardens transform waste and weeds into active places of beauty and growth.

management of park affairs and the securing of grants. This coalition will help organize to events such as: a summer film series, music festivals, art and dance workshops, outdoor markets, and community garden development. It will also ensure that the park remains safe and clean for all kinds of active outdoor use year-round.



Concrete platforms are retrofitted as event spaces for local organizations.



Platforms are embraced as community space for festivals and markets.

EDUCATION AND ECOLOGY



Art walls as a backdrop for education and play.

Local schools can utilize the park for eco-classrooms; grass plantings become areas for outdoor play; and sensitive ecological plantings act as a focal point for horticultural study and biodiversity.



Spaces reappropriated for innovation and creativity.



Overgrown terrain becomes usable space for passive recreation.



Existing desire lines become gravel paths for exploration and study.

Grasses are selected for use: Lawn allows for active & passive recreation, native grasses accompany meandering pathways, wildflower plantings enhance historical structures, and ornamental grasses highlight focal points of the design.



Overhead canvases become a new medium of expression for local artists.

Overhead canvases take root in soft terrain, newly-planted grass beds, or in the hard ground of the concrete platforms. They provide shade, act as temporary structures for weekend markets, sitting for outdoor workshops, and artist events. Made of a variety of fabrics from those photoluminescent for night events to material with UV protection for shade, or high-quality canvas to support artists' works, the floating canvases become backdrops, walls, canopies, and art, defining the park and its users.



Photoluminescent materials allow canvas structures to be used for nighttime events and gatherings.



CANVASES AS EVENT SPACE



Community groups use canvases to post information.



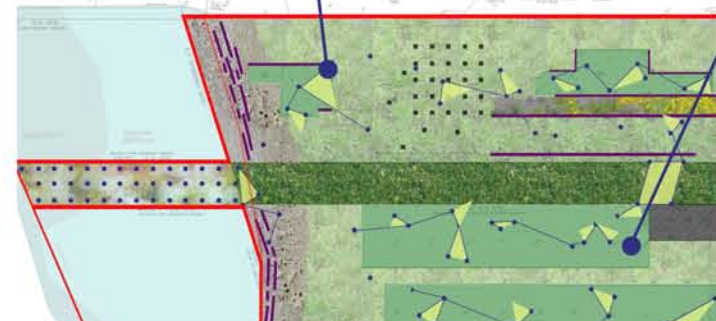
Artists transform canvases on-site into floating works of art.



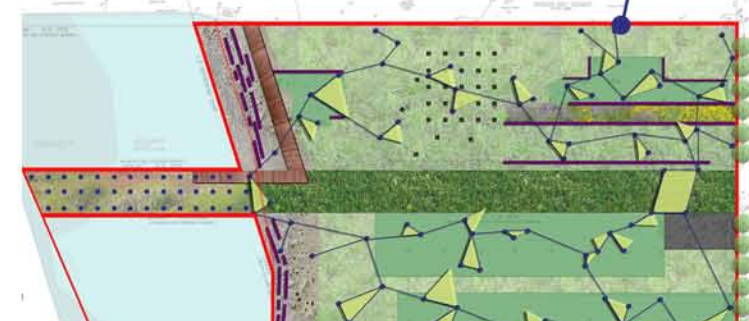
PHASE ONE: 1 YEAR
Forming of community coalition, design development underway. Clearing of debris, demolition, salvage materials for reuse. Planting of grasses. Development of public access to waterfront.



PHASE TWO: 2-5 YEARS
Establish early stages of floating garden. Reuse or greening of salvaged materials to engage design, ecology, and user intentions. Implement beach erosion control. Foundation for canvas infrastructure begins taking root with community participation.



PHASE THREE: 5-10 YEARS
Establish wildflower meadow, extend grass plantings to carpet all surfaces. Develop more fully soft and hardscape spaces/ active and passive uses. Floating garden takes form & provides diverse ecology at water's edge. Beach erosion control & development of community spaces furthered.



PHASE FOUR: 10-20 YEARS
Boardwalk at beach constructed. Floating garden fully established. Changing pattern of canvases. Rotating events based on uses of established and new community groups. Community spaces grow and evolve. Street trees planted.